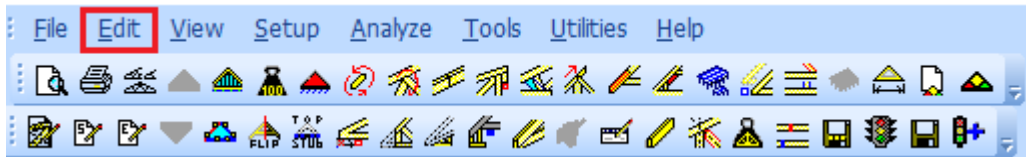
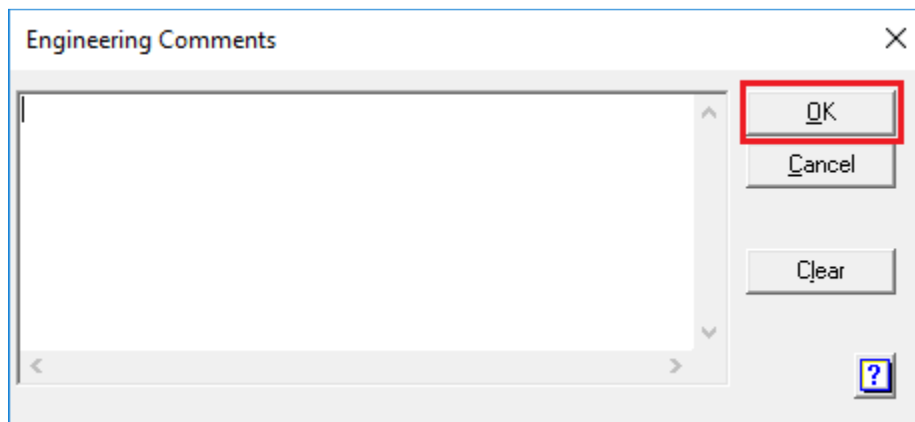


A little known feature within MiTek Engineering software known as the “Engineering Comments” can serve to be a great communication tool between a Truss Designer and a MiTek Engineer. This simple feature allows the Truss Designer to make a comment in a dialogue box about the specific truss they are working on.

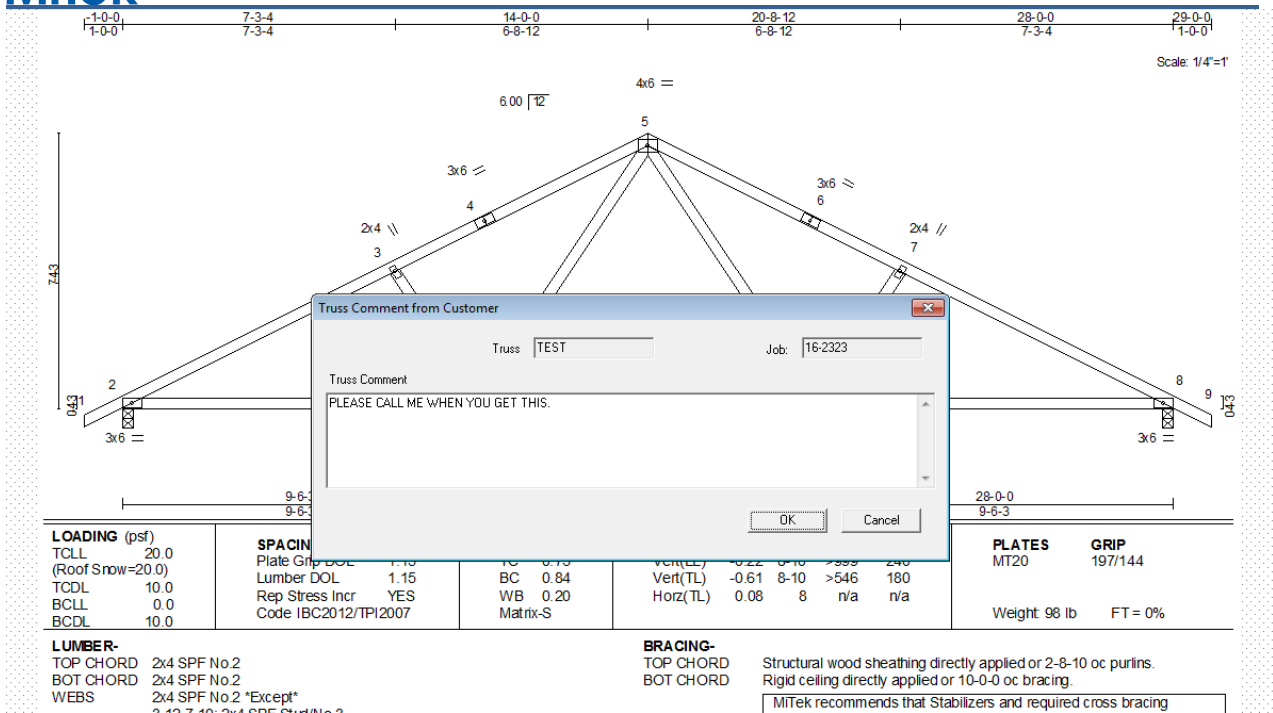
This feature is located in the top menu bar under the “Edit” heading. Under that menu there is an option called “Engineering Comments”.



When selected, an Engineering Comments, dialog box appears. Initially, this dialog box will be blank. At this point the user may enter their own text. The comment can be as simple as “Call me when you get this” or “Why is there an uplift at the interior bearing?” or “I need help with loading this truss”. The user can type in any information they want their MiTek Design Engineer to see. After entering their comments the user clicks OK.



When the truss design drawing that gets created at MiTek comes up for review by the MiTek Truss Design Engineer, they will see this comment.



It is a great way for MiTek Engineering customers to use their time more efficiently and for the MiTek Engineers to understand quickly what the Truss Designer is questioning. As the truss designs go through our design team, first they see the note and respond accordingly, then Sealing Engineer sees it as he or she is sealing the document and can recognize if further action is required or if the situation has been handled. As the old adage goes “a picture is worth a thousand words” when the MiTek Engineers see the actual truss design in question they can better answer the question.

Currently this feature is only available for trusses sent through the Link and is not active for trusses sent through the Transfer Center.

If you have questions regarding this feature please, contact the MiTek Engineering department.